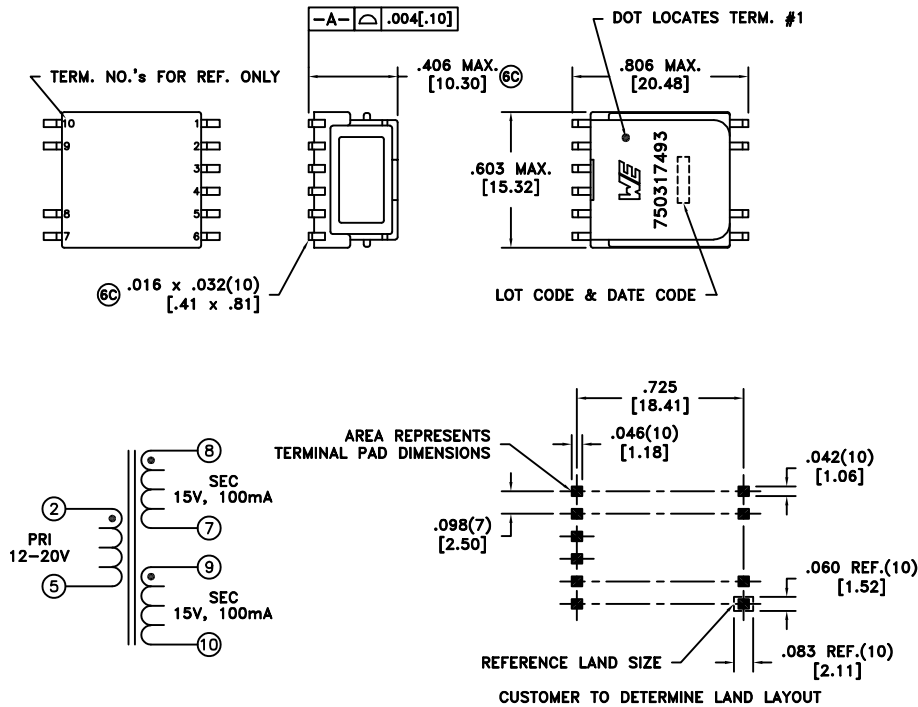


CUSTOMER TERMINAL	RoHS	LEAD(Pb)-FREE
Sn96%, Ag4%	Yes	Yes



ELECTRICAL SPECIFICATIONS @ 25°C unless otherwise noted:

PARAMETER	TEST CONDITIONS	VALUE
D.C. RESISTANCE	2-5 @20°C	0.265 ohms ±20%
D.C. RESISTANCE	8-7 @20°C	0.290 ohms ±20%
D.C. RESISTANCE	9-10 @20°C	0.290 ohms ±20%
INDUCTANCE	2-5 100kHz, 100mVAC, Ls	1.40mH typ., 0.90mH min.
LEAKAGE INDUCTANCE	2-5 tie(7+8), 100kHz, 100mVAC, Ls	400nH typ., 800nH max.
LEAKAGE INDUCTANCE	2-5 tie(9+10), 100kHz, 100mVAC, Ls	400nH typ., 800nH max.
INTERWINDING CAPACITANCE	2-8 10kHz, 10mVAC, Cs	5.0pF typ., 10.0pF max.
INTERWINDING CAPACITANCE	2-9 10kHz, 10mVAC, Cs	5.0pF typ., 10.0pF max.
INTERWINDING CAPACITANCE	2-10 tie(8+9), 10kHz, 10mVAC, Cs	7.0pF typ., 12.0pF max.
DIELECTRIC	2-10 tie(8+9), 4500VAC, 2 seconds	4500VAC, 1 minute
6C DIELECTRIC	8-9 2000VAC, 2 seconds	2000VAC, 1 minute
6C TURNS RATIO	(8-7):(2-5)	1.07:1
6C TURNS RATIO	(9-10):(2-5)	1.07:1
6C PARTIAL DISCHARGE	2-10 tie(8+9), 1410Vrms 5 sec., 1130Vrms 15 sec.	10pC

GENERAL SPECIFICATIONS:

- 6C OPERATING TEMPERATURE RANGE: -40°C to +125°C including temp rise.
- 6C VOLTAGE-TIME: 73Vus based on unipolar waveform
147Vus based on bipolar waveform
- 6C Designed to comply with the following requirements as defined by IEC62368-1, EN62368-1, UL62368-1/CSA62368-1 and AS/NZS62368.1:
 - Reinforced insulation for a primary circuit at a working voltage of 750Vrms, 1060Vpeak, Overvoltage Category III, Pollution Degree 2.
 - Basic insulation for a primary circuit at a working voltage of 1000Vrms, 1400Vpeak, Overvoltage Category III, Pollution Degree 2.
- 6C Designed to comply with the following requirements as defined by IEC61800-5-1, and EN61800-5-1:
 - Reinforced insulation for a primary circuit at a working voltage of 750Vrms, 1060Vpeak, Overvoltage Category III, Pollution Degree 2.
 - Basic insulation for a primary circuit at a working voltage of 1000Vrms, 1400Vpeak, Overvoltage Category III, Pollution Degree 2.
- 6C Designed to comply with 15.4mm of creepage and clearance between PRI and SEC as defined by IEC60664-1.
- 6C Designed to comply with 5.75mm of creepage and clearance between SEC and SEC as defined by IEC60664-1.
- 6C Designed to meet 12kV (1.2 x 50usec, 5± repetitions) surge test between PRI and SEC.

Wire insulation & RoHS status not affected by wire color.
Wire insulation color may vary depending on availability.

REV.	DATE	Packaging Specifications	Tolerances unless otherwise specified:	DRAWING TITLE	PART NO.
		Method: Tape & Reel PKG-1195 www.we-online.com/midcom	Angles: ±1° Fractions: ±1/64 Decimals: ±.005 [.13] Footprint: ±.005 [.13]	TRANSFORMER	750317493
6C	8/24				
6B	3/21				
6A	4/19	SEE REVISION SHEET FOR REVISION LEVEL	This drawing is dual dimensioned. Dimensions in brackets are in millimeters.	eiSos p/n: 750317493	SPECIFICATION SHEET 1 OF 1